

**Shape.  
Join.  
Look ahead.**

# **45°/60°/90° Segmental elbows**

**weil**   
**technology**

*A brand of weil engineering gmbh*

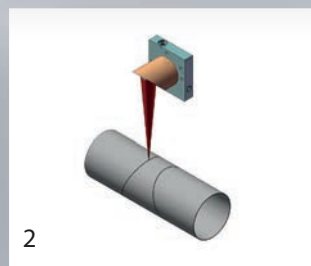
*Machinery and equipment  
for innovative forming  
cutting and joining systems*

## Segmental elbows:



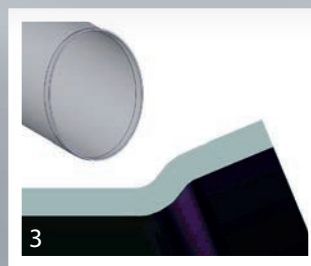
1

The processing steps shown start from the short tube (1).



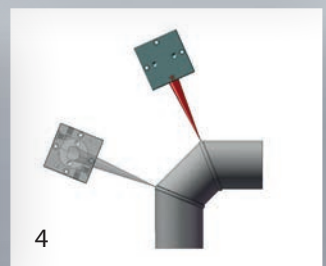
2

Contour cut: Cutting of the short tube into several segments (2).



3

Forming of the tube ends (3).



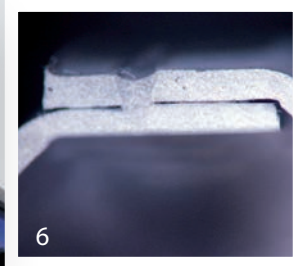
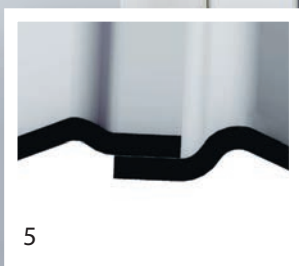
4

Welding of the overlapped elbow segments with laser (4).

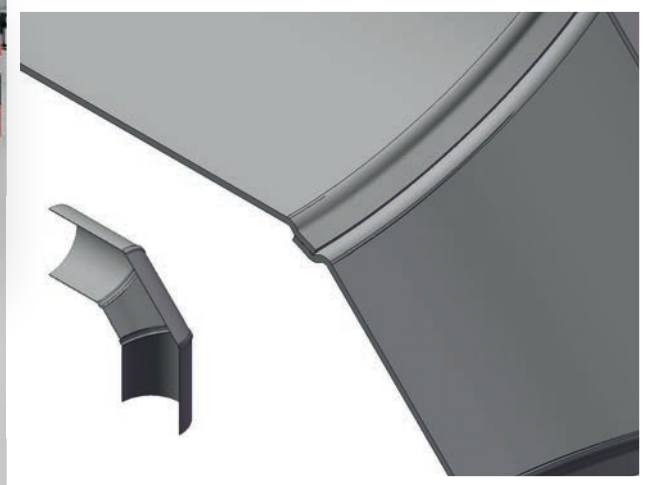
# Laser processing in perfection: From short tube to segmental elbow.



Technical data	
Diameter	80 - 400 mm
Material thickness	0,4 - 1,0 mm
Angle	45°, 60°, 90°
Material	Stainless steel, mild steel
Welding source	Laser



Overlap seam, represented in design (5) and in cross section (6).



*weil engineering gmbh  
Headquarters Müllheim  
Plant 2*



*weil engineering gmbh*

*Neuenburger Str. 23  
79379 Müllheim  
Germany*

*+49 7631 1809-0 Phone  
+49 7631 1809-149 Fax*

*info@weil-engineering.de  
www.weil-engineering.de*

*Weil Engineering  
North America LLC*

*25921 Meadowbrook Road  
Novi, MI 48375  
USA*

*+1 248 344 2211 Phone  
+1 248 344 2220 Fax*

*info@weilengineering.com  
www.weilengineering.com*

*SCHAAL engineering GmbH*

*Postweg 27  
73084 Salach  
Germany*

*+49 7162 9607-0 Phone  
+49 7162 9607-77 Fax*

*info@schaal-engineering.de  
www.schaal-engineering.de*

*Weil Machinery (Shanghai) Co., Ltd.*

*11/F, Tower B, Central Towers  
No. 567 Lan Gao Road, Putuo  
District  
Shanghai, 200333  
China*

*+ 86 158 0177 6073 Phone/Fax/  
Mobile*

*info@weil-machinery.cn  
www.weil-machinery.cn*

*Protected by U.S. Patents:  
Apparatus for manufacturing tubes US  
7,293,687 B2 - Nov. 13, 2007  
Continuous welding machine  
for welding a pipe blank US  
2008/0257938 A1 - Oct. 23, 2008  
Roll-forming or bending machine US  
7,536,891 B2 - May 26, 2009*

